



THE RESORT COLLECTION

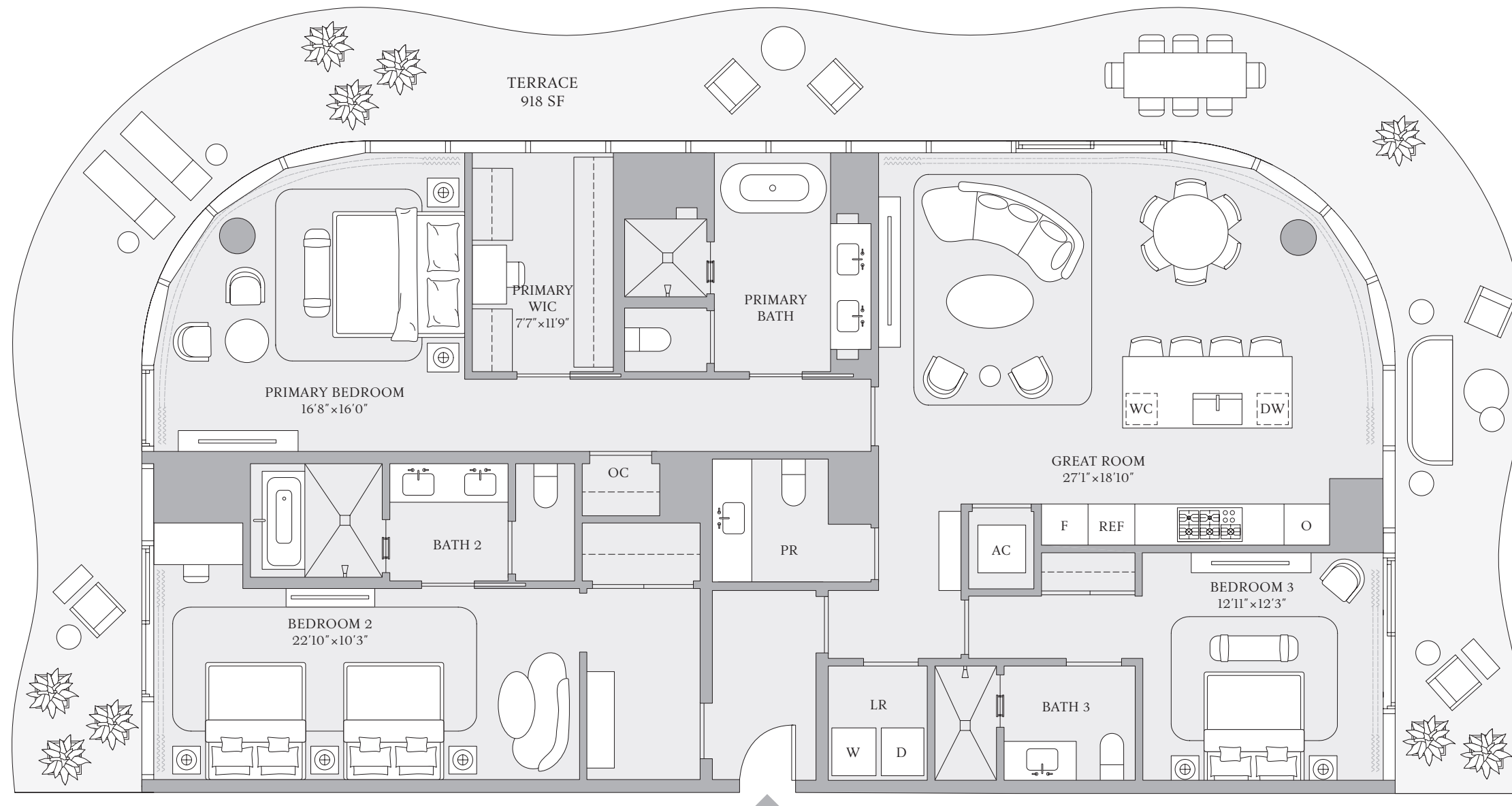
RESIDENCES 01 & 06
FLOORS 14–23

3 BEDROOMS
3 BATHROOMS
POWDER ROOM

INTERIOR
2,278 SF | 212 SQM

EXTERIOR
918 SF | 85 SQM

TOTAL
3,196 SF | 297 SQM



INTRACOASTAL WATERWAY



ATLANTIC OCEAN



The dimensions stated for any depicted unit floor plan are approximate because there are various recognized methods for calculating the square footage of a unit. The square footage stated herein is calculated from the exterior boundaries of the exterior walls to the centerline of interior demising walls without deductions for cutouts, curves, or architectural features. This method results in quoted dimensions greater than the dimensions that would be determined by using other accepted methods. The definition of "Unit" and the calculation method to be relied upon is set forth by the Developer in the Developer's Prospectus. The method set forth in the Developer's Prospectus is another commonly accepted method of calculation, but it will result in a square footage calculation that is less than the method used here. The illustrated layout, locations of windows, doors, closets, plumbing fixtures, mechanical equipment, appliances, structural elements, architectural elements, and the uses, configurations, and entries to rooms are conceptual and may change based on final approved plans, permitting, and completed construction. The illustrated furniture and the uses of space are suggested uses only and are not intended to represent or guarantee any specific use of space or accommodation of specific furnishings. Furnishings, design features, fixtures, and décor illustrated are not included with a unit purchase. Consult the Developer's Prospectus to understand what is offered with the purchase and the calculation of the Unit square footage and dimensions to be relied upon. 2024 © by PRH/TRR BM Condo, LLC, with all rights reserved. ☹



THE RESORT COLLECTION

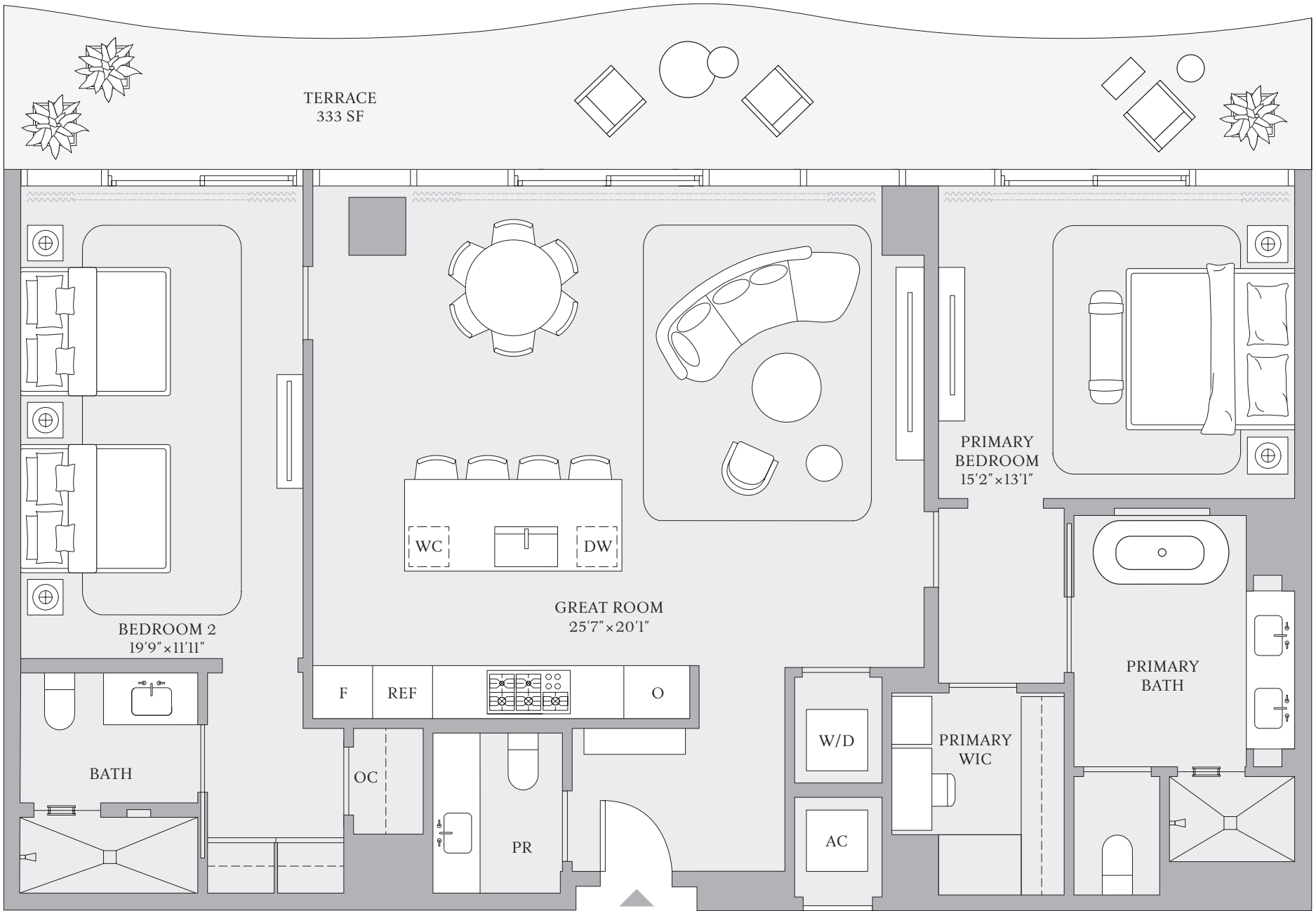
RESIDENCES 02 & 05
FLOORS 14–18

2 BEDROOMS
2 BATHROOMS
POWDER ROOM

INTERIOR
1,647 SF | 153 SQM

EXTERIOR
333 SF | 31 SQM

TOTAL
1,980 SF | 184 SQM



INTRACOASTAL WATERWAY



ATLANTIC OCEAN



The dimensions stated for any depicted unit floor plan are approximate because there are various recognized methods for calculating the square footage of a unit. The square footage stated herein is calculated from the exterior boundaries of the exterior walls to the centerline of interior demising walls without deductions for cutouts, curves, or architectural features. This method results in quoted dimensions greater than the dimensions that would be determined by using other accepted methods. The definition of "Unit" and the calculation method to be relied upon is set forth by the Developer in the Developer's Prospectus. The method set forth in the Developer's Prospectus is another commonly accepted method of calculation, but it will result in a square footage calculation that is less than the method used here. The illustrated layout, locations of windows, doors, closets, plumbing fixtures, mechanical equipment, appliances, structural elements, architectural elements, and the uses, configurations, and entries to rooms are conceptual and may change based on final approved plans, permitting, and completed construction. The illustrated furniture and the uses of space are suggested uses only and are not intended to represent or guarantee any specific use of space or accommodation of specific furnishings. Furnishings, design features, fixtures, and décor illustrated are not included with a unit purchase. Consult the Developer's Prospectus to understand what is offered with the purchase and the calculation of the Unit square footage and dimensions to be relied upon. 2024 © by PRH/TRR BM Condo, LLC, with all rights reserved. ☹



THE RESORT COLLECTION

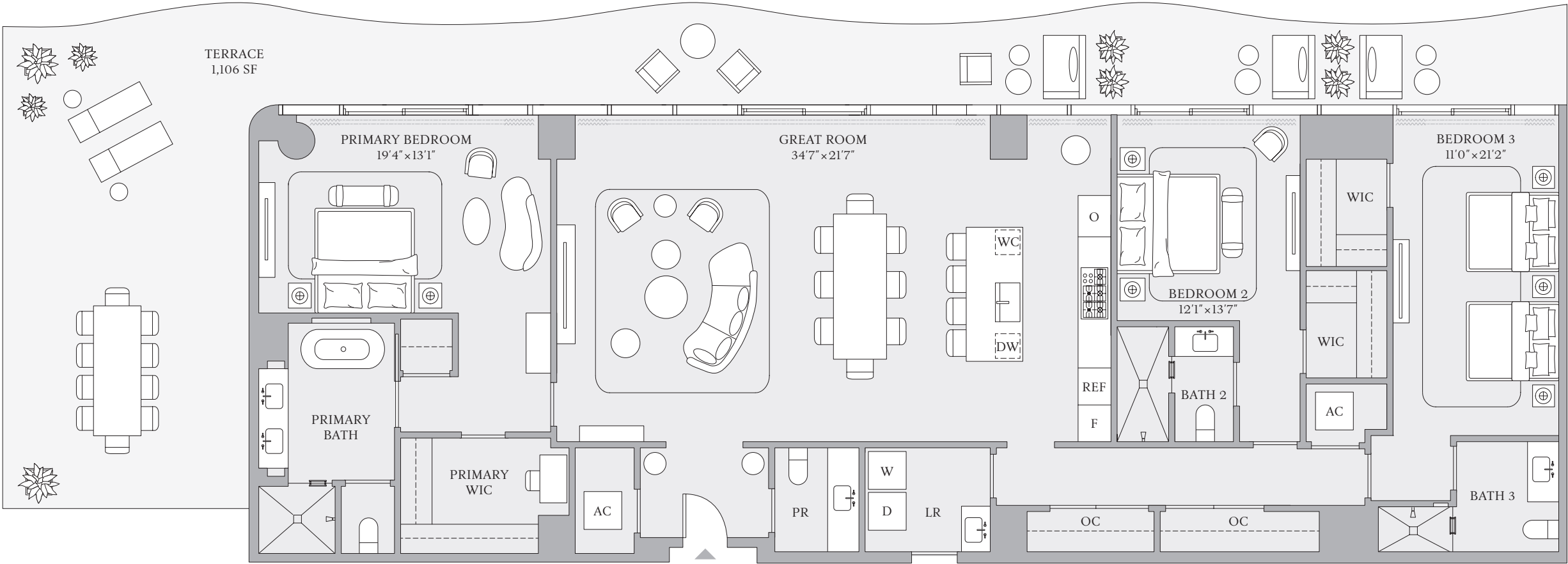
RESIDENCES 02 & 05
FLOOR 19

3 BEDROOMS
3 BATHROOMS
POWDER ROOM

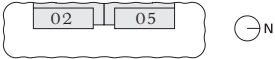
INTERIOR
2,737 SF | 254 SQM

EXTERIOR
1,106 SF | 103 SQM

TOTAL
3,843 SF | 357 SQM



INTRACOASTAL WATERWAY



ATLANTIC OCEAN



The dimensions stated for any depicted unit floor plan are approximate because there are various recognized methods for calculating the square footage of a unit. The square footage stated herein is calculated from the exterior boundaries of the exterior walls to the centerline of interior demising walls without deductions for cutouts, curves, or architectural features. This method results in quoted dimensions greater than the dimensions that would be determined by using other accepted methods. The definition of "Unit" and the calculation method to be relied upon is set forth by the Developer in the Developer's Prospectus. The method set forth in the Developer's Prospectus is another commonly accepted method of calculation, but it will result in a square footage calculation that is less than the method used here. The illustrated layout, locations of windows, doors, closets, plumbing fixtures, mechanical equipment, appliances, structural elements, architectural elements, and the uses, configurations, and entries to rooms are conceptual and may change based on final approved plans, permitting, and completed construction. The illustrated furniture and the uses of space are suggested uses only and are not intended to represent or guarantee any specific use of space or accommodation of specific furnishings. Furnishings, design features, fixtures, and décor illustrated are not included with a unit purchase. Consult the Developer's Prospectus to understand what is offered with the purchase and the calculation of the Unit square footage and dimensions to be relied upon. 2024 © by PRH/TRR BM Condo, LLC, with all rights reserved. ®



THE RESORT COLLECTION

RESIDENCES 02 & 05
FLOORS 20–23

3 BEDROOMS
3 BATHROOMS
POWDER ROOM

RESIDENCE 05:

INTERIOR
2,737 SF | 254 SQM

EXTERIOR
562 SF | 52 SQM

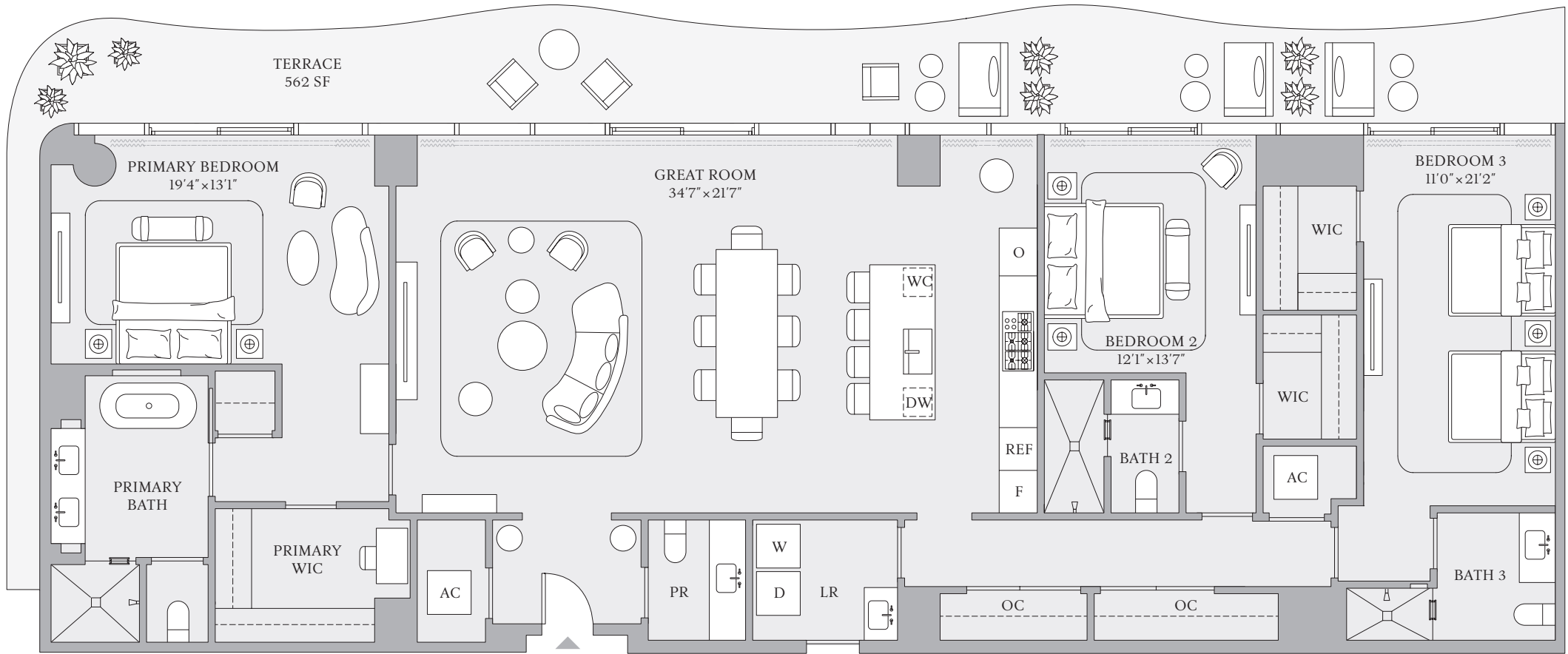
TOTAL
3,299 SF | 306 SQM

RESIDENCE 02:

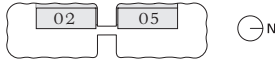
INTERIOR
2,718 SF | 253 SQM

EXTERIOR
562 SF | 52 SQM

TOTAL
3,280 SF | 305 SQM



INTRACOASTAL WATERWAY



ATLANTIC OCEAN



The dimensions stated for any depicted unit floor plan are approximate because there are various recognized methods for calculating the square footage of a unit. The square footage stated herein is calculated from the exterior boundaries of the exterior walls to the centerline of interior demising walls without deductions for cutouts, curves, or architectural features. This method results in quoted dimensions greater than the dimensions that would be determined by using other accepted methods. The definition of "Unit" and the calculation method to be relied upon is set forth by the Developer in the Developer's Prospectus. The method set forth in the Developer's Prospectus is another commonly accepted method of calculation, but it will result in a square footage calculation that is less than the method used here. The illustrated layout, locations of windows, doors, closets, plumbing fixtures, mechanical equipment, appliances, structural elements, architectural elements, and the uses, configurations, and entries to rooms are conceptual and may change based on final approved plans, permitting, and completed construction. The illustrated furniture and the uses of space are suggested uses only and are not intended to represent or guarantee any specific use of space or accommodation of specific furnishings. Furnishings, design features, fixtures, and décor illustrated are not included with a unit purchase. Consult the Developer's Prospectus to understand what is offered with the purchase and the calculation of the Unit square footage and dimensions to be relied upon. 2024 © by PRH/TRR BM Condo, LLC, with all rights reserved. ®



THE RESORT COLLECTION

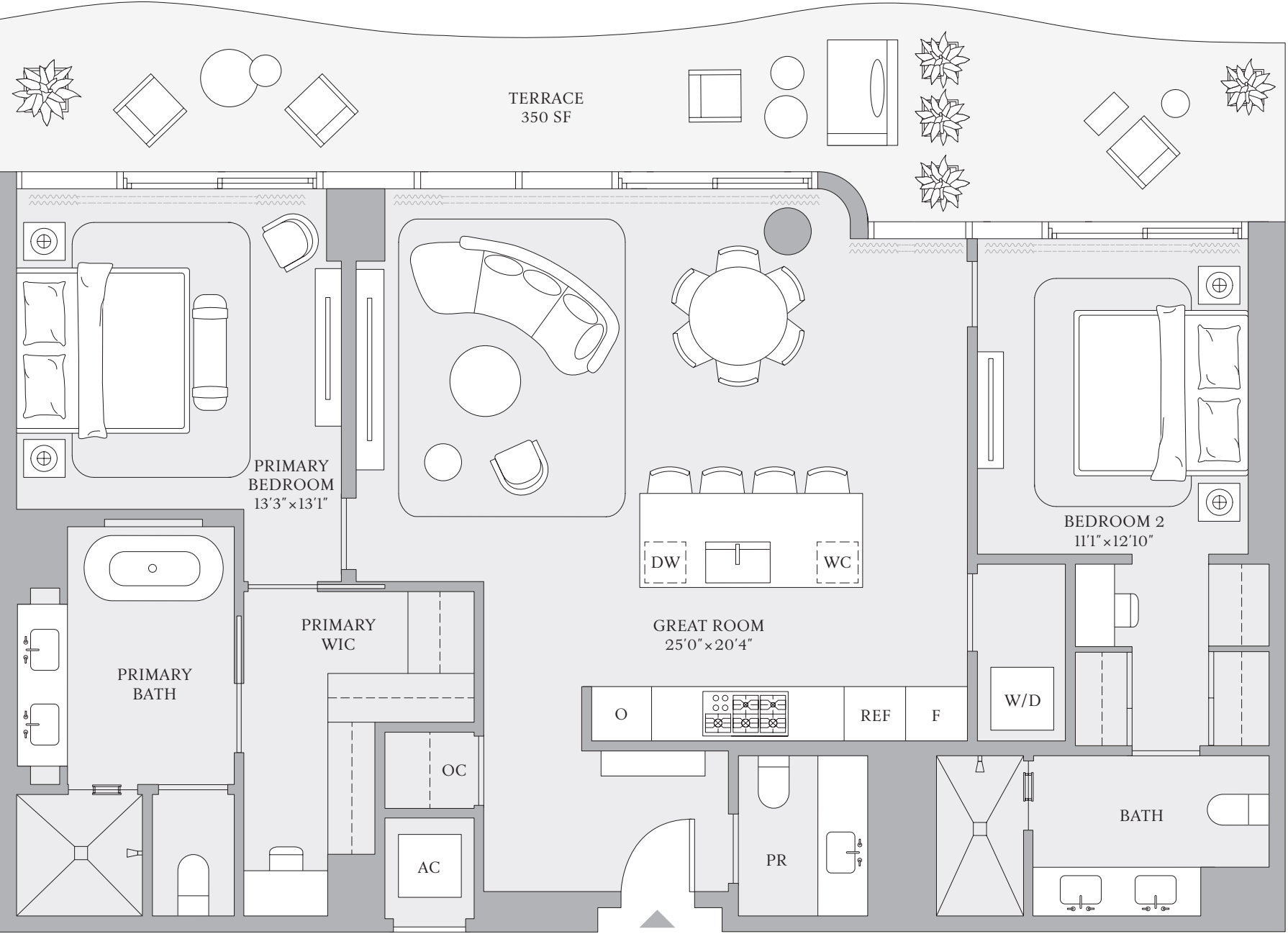
RESIDENCES 03 & 04
FLOORS 14, 17, 18

2 BEDROOMS
2 BATHROOMS
POWDER ROOM

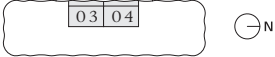
INTERIOR
1,551 SF | 144 SQM

EXTERIOR
350 SF | 33 SQM

TOTAL
1,901 SF | 177 SQM



INTRACOASTAL WATERWAY



ATLANTIC OCEAN



The dimensions stated for any depicted unit floor plan are approximate because there are various recognized methods for calculating the square footage of a unit. The square footage stated herein is calculated from the exterior boundaries of the exterior walls to the centerline of interior demising walls without deductions for cutouts, curves, or architectural features. This method results in quoted dimensions greater than the dimensions that would be determined by using other accepted methods. The definition of "Unit" and the calculation method to be relied upon is set forth by the Developer in the Developer's Prospectus. The method set forth in the Developer's Prospectus is another commonly accepted method of calculation, but it will result in a square footage calculation that is less than the method used here. The illustrated layout, locations of windows, doors, closets, plumbing fixtures, mechanical equipment, appliances, structural elements, architectural elements, and the uses, configurations, and entries to rooms are conceptual and may change based on final approved plans, permitting, and completed construction. The illustrated furniture and the uses of space are suggested uses only and are not intended to represent or guarantee any specific use of space or accommodation of specific furnishings. Furnishings, design features, fixtures, and décor illustrated are not included with a unit purchase. Consult the Developer's Prospectus to understand what is offered with the purchase and the calculation of the Unit square footage and dimensions to be relied upon. 2024 © by PRH/TRR BM Condo, LLC, with all rights reserved. ®



THE RESORT COLLECTION

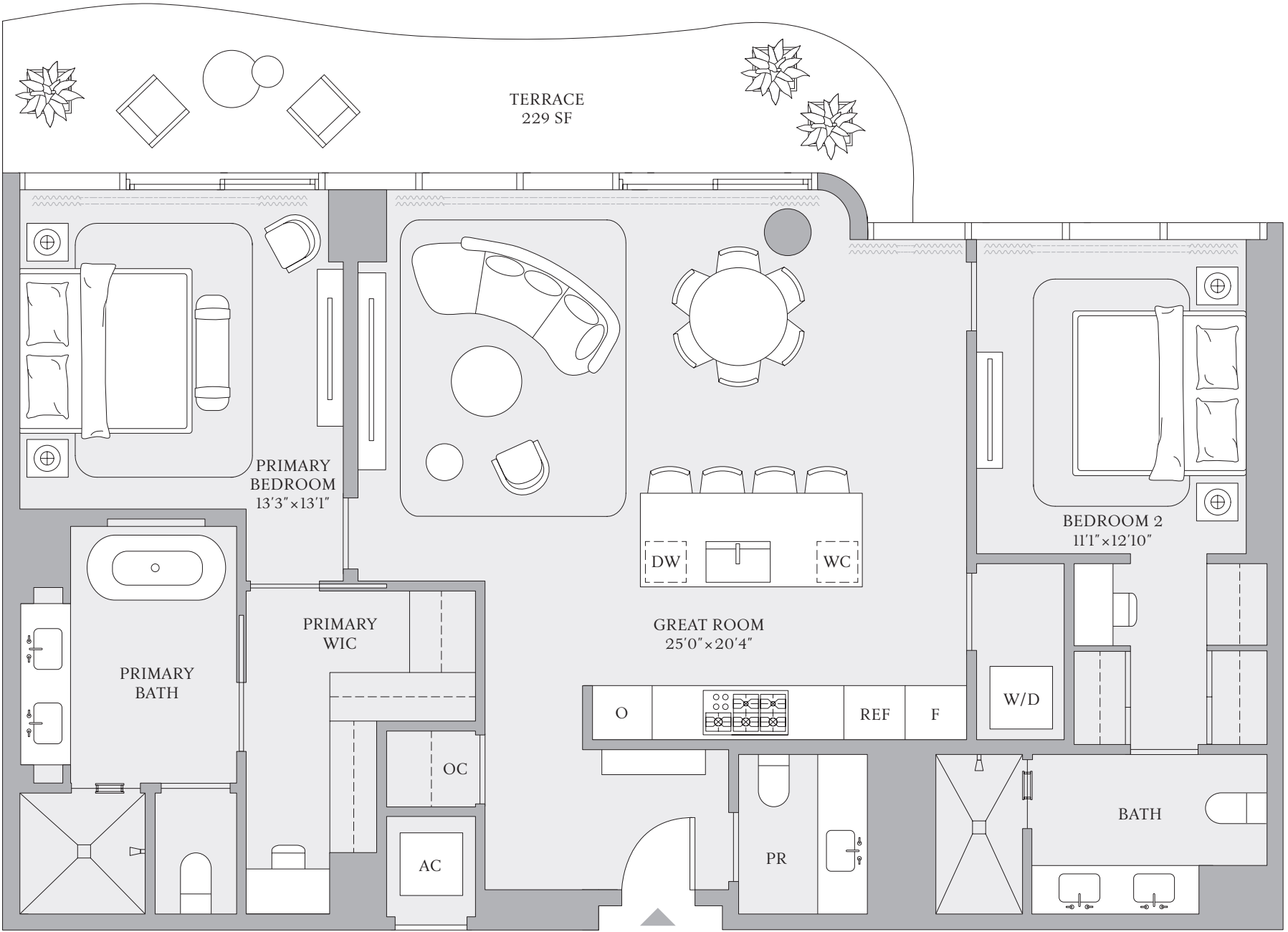
RESIDENCES 03 & 04
FLOORS 15, 16

2 BEDROOMS
2 BATHROOMS
POWDER ROOM

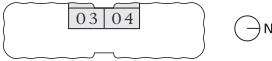
INTERIOR
1,551 SF | 144 SQM

EXTERIOR
229 SF | 21 SQM

TOTAL
1,780 SF | 165 SQM



INTRACOASTAL WATERWAY



ATLANTIC OCEAN



The dimensions stated for any depicted unit floor plan are approximate because there are various recognized methods for calculating the square footage of a unit. The square footage stated herein is calculated from the exterior boundaries of the exterior walls to the centerline of interior demising walls without deductions for cutouts, curves, or architectural features. This method results in quoted dimensions greater than the dimensions that would be determined by using other accepted methods. The definition of "Unit" and the calculation method to be relied upon is set forth by the Developer in the Developer's Prospectus. The method set forth in the Developer's Prospectus is another commonly accepted method of calculation, but it will result in a square footage calculation that is less than the method used here. The illustrated layout, locations of windows, doors, closets, plumbing fixtures, mechanical equipment, appliances, structural elements, architectural elements, and the uses, configurations, and entries to rooms are conceptual and may change based on final approved plans, permitting, and completed construction. The illustrated furniture and the uses of space are suggested uses only and are not intended to represent or guarantee any specific use of space or accommodation of specific furnishings. Furnishings, design features, fixtures, and décor illustrated are not included with a unit purchase. Consult the Developer's Prospectus to understand what is offered with the purchase and the calculation of the Unit square footage and dimensions to be relied upon. 2024 © by PRH/TRR BM Condo, LLC, with all rights reserved. ®



THE RESORT COLLECTION

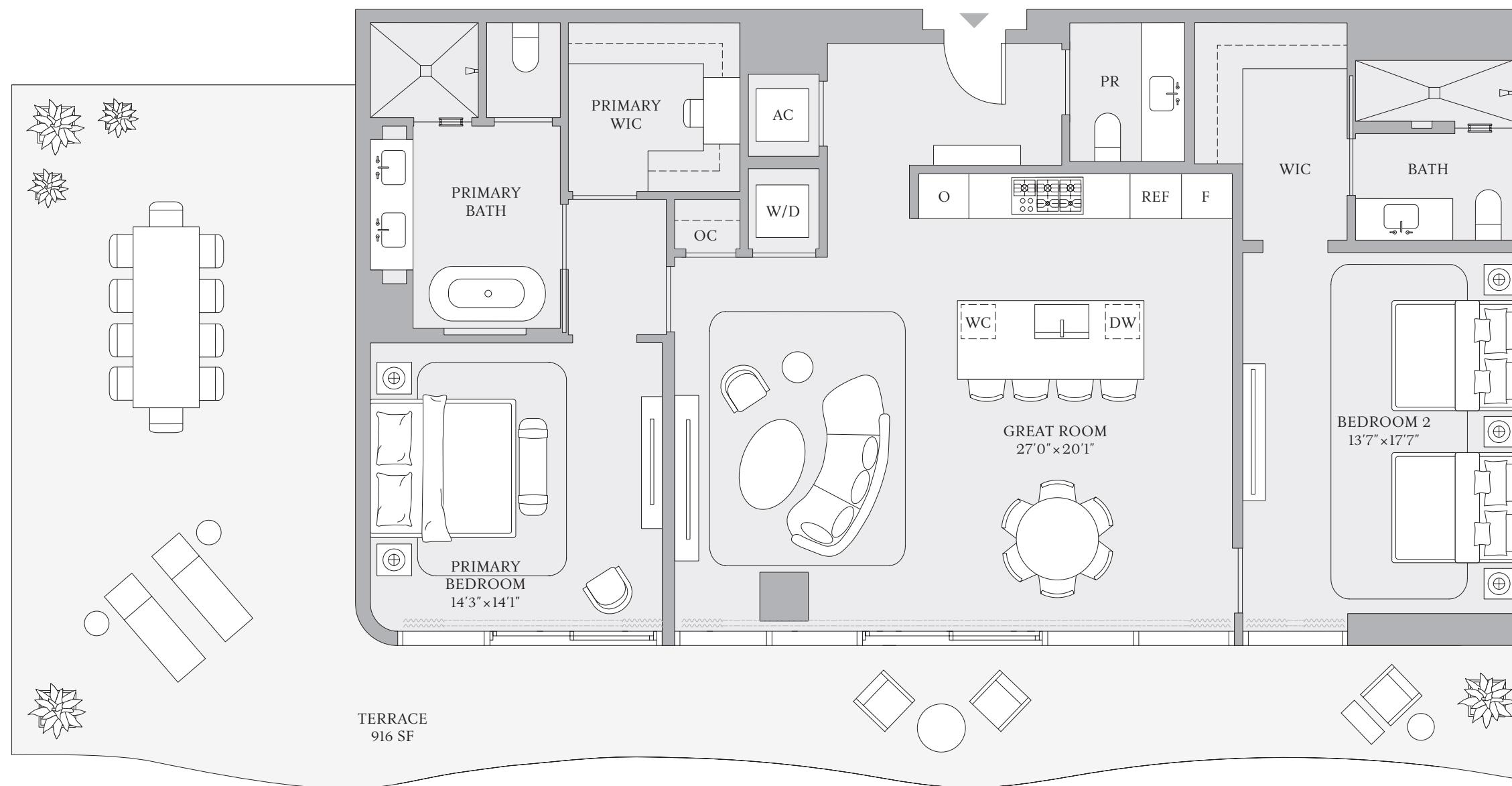
RESIDENCE 07
FLOOR 19

2 BEDROOMS
2 BATHROOMS
POWDER ROOM

INTERIOR
1,737 SF | 161 SQM

EXTERIOR
916 SF | 85 SQM

TOTAL
2,653 SF | 246 SQM



INTRACOASTAL WATERWAY



ATLANTIC OCEAN



The dimensions stated for any depicted unit floor plan are approximate because there are various recognized methods for calculating the square footage of a unit. The square footage stated herein is calculated from the exterior boundaries of the exterior walls to the centerline of interior demising walls without deductions for cutouts, curves, or architectural features. This method results in quoted dimensions greater than the dimensions that would be determined by using other accepted methods. The definition of "Unit" and the calculation method to be relied upon is set forth by the Developer in the Developer's Prospectus. The method set forth in the Developer's Prospectus is another commonly accepted method of calculation, but it will result in a square footage calculation that is less than the method used here. The illustrated layout, locations of windows, doors, closets, plumbing fixtures, mechanical equipment, appliances, structural elements, architectural elements, and the uses, configurations, and entries to rooms are conceptual and may change based on final approved plans, permitting, and completed construction. The illustrated furniture and the uses of space are suggested uses only and are not intended to represent or guarantee any specific use of space or accommodation of specific furnishings. Furnishings, design features, fixtures, and décor illustrated are not included with a unit purchase. Consult the Developer's Prospectus to understand what is offered with the purchase and the calculation of the Unit square footage and dimensions to be relied upon. 2024 © by PRH/TRR BM Condo, LLC, with all rights reserved. ®



THE RESORT COLLECTION

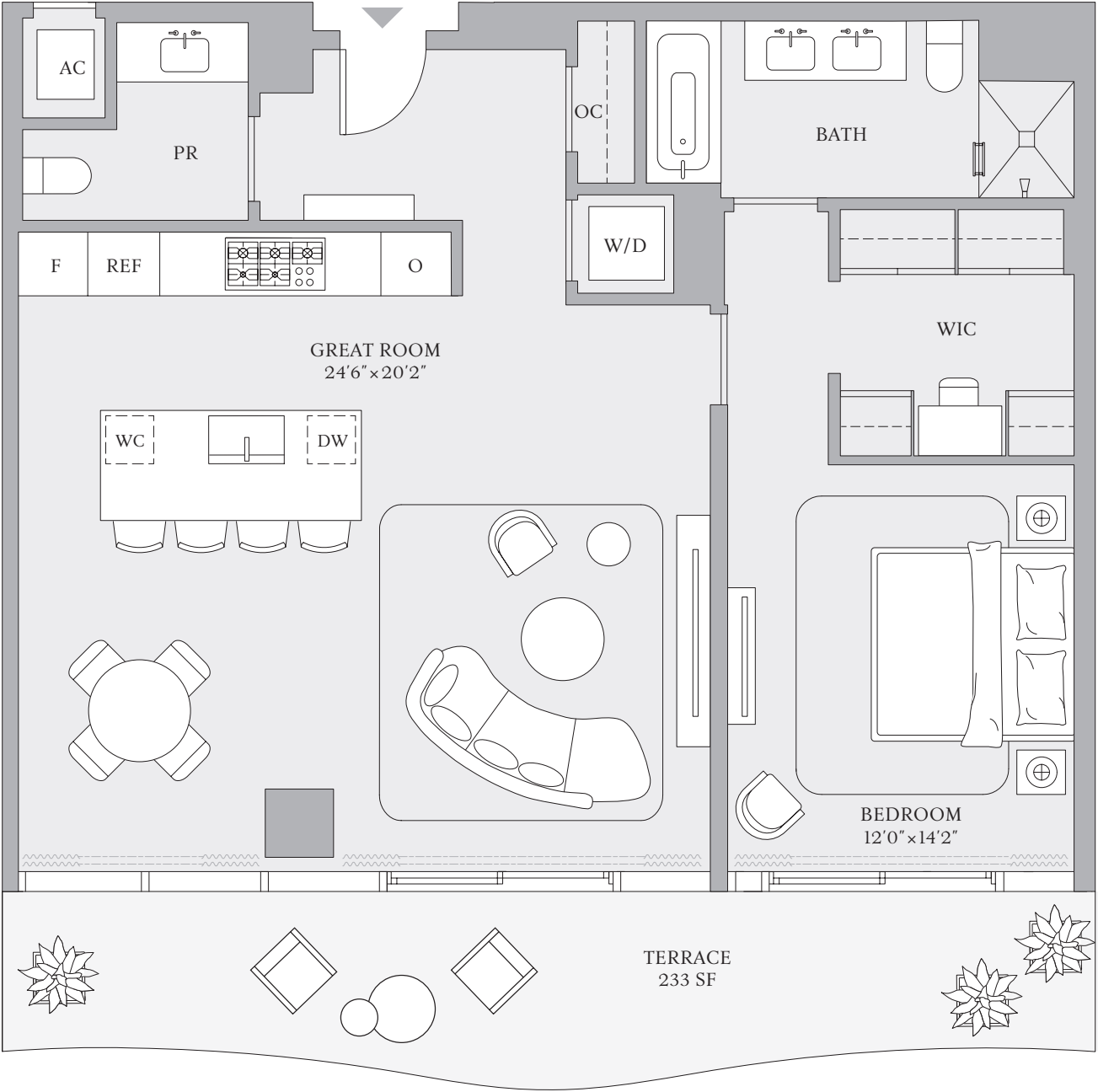
RESIDENCE 07
FLOORS 14–16

1 BEDROOM
1 BATHROOM
POWDER ROOM

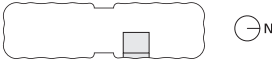
INTERIOR
1,160 SF | 108 SQM

EXTERIOR
233 SF | 22 SQM

TOTAL
1,393 SF | 130 SQM



INTRACOASTAL WATERWAY



ATLANTIC OCEAN



The dimensions stated for any depicted unit floor plan are approximate because there are various recognized methods for calculating the square footage of a unit. The square footage stated herein is calculated from the exterior boundaries of the exterior walls to the centerline of interior demising walls without deductions for cutouts, curves, or architectural features. This method results in quoted dimensions greater than the dimensions that would be determined by using other accepted methods. The definition of "Unit" and the calculation method to be relied upon is set forth by the Developer in the Developer's Prospectus. The method set forth in the Developer's Prospectus is another commonly accepted method of calculation, but it will result in a square footage calculation that is less than the method used here. The illustrated layout, locations of windows, doors, closets, plumbing fixtures, mechanical equipment, appliances, structural elements, architectural elements, and the uses, configurations, and entries to rooms are conceptual and may change based on final approved plans, permitting, and completed construction. The illustrated furniture and the uses of space are suggested uses only and are not intended to represent or guarantee any specific use of space or accommodation of specific furnishings. Furnishings, design features, fixtures, and décor illustrated are not included with a unit purchase. Consult the Developer's Prospectus to understand what is offered with the purchase and the calculation of the Unit square footage and dimensions to be relied upon. 2024 © by PRH/TRR BM Condo, LLC, with all rights reserved. ®



THE RESORT COLLECTION

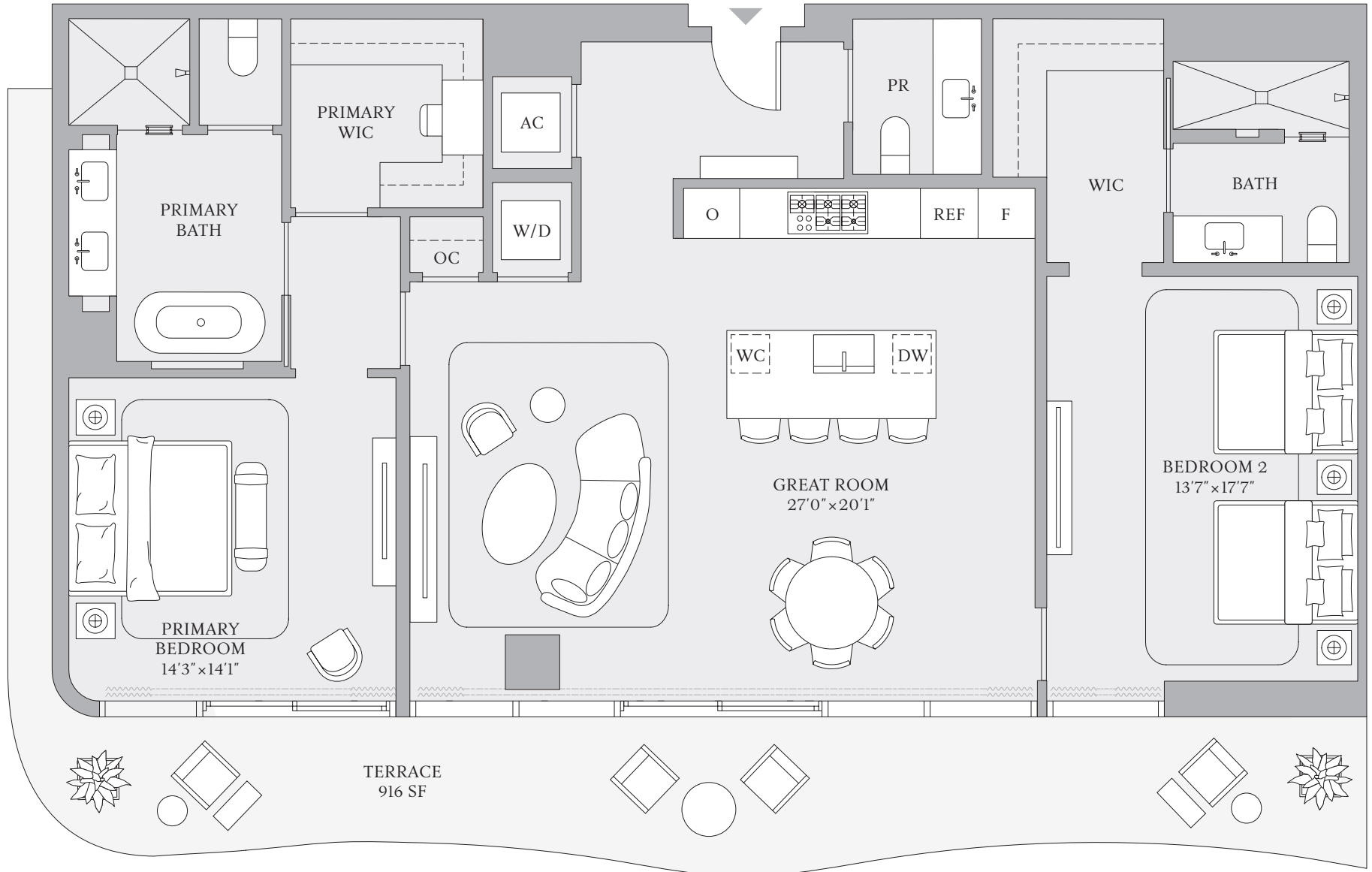
RESIDENCE 07
FLOORS 20–24

2 BEDROOMS
2 BATHROOMS
POWDER ROOM

INTERIOR
1,737 SF | 161 SQM

EXTERIOR
370 SF | 34 SQM

TOTAL
2,107 SF | 195 SQM



INTRACOASTAL WATERWAY



ATLANTIC OCEAN



FORT LAUDERDALE

The dimensions stated for any depicted unit floor plan are approximate because there are various recognized methods for calculating the square footage of a unit. The square footage stated herein is calculated from the exterior boundaries of the exterior walls to the centerline of interior demising walls without deductions for cutouts, curves, or architectural features. This method results in quoted dimensions greater than the dimensions that would be determined by using other accepted methods. The definition of "Unit" and the calculation method to be relied upon is set forth by the Developer in the Developer's Prospectus. The method set forth in the Developer's Prospectus is another commonly accepted method of calculation, but it will result in a square footage calculation that is less than the method used here. The illustrated layout, locations of windows, doors, closets, plumbing fixtures, mechanical equipment, appliances, structural elements, architectural elements, and the uses, configurations, and entries to rooms are conceptual and may change based on final approved plans, permitting, and completed construction. The illustrated furniture and the uses of space are suggested uses only and are not intended to represent or guarantee any specific use of space or accommodation of specific furnishings. Furnishings, design features, fixtures, and décor illustrated are not included with a unit purchase. Consult the Developer's Prospectus to understand what is offered with the purchase and the calculation of the Unit square footage and dimensions to be relied upon. 2024 © by PRH/TRR BM Condo, LLC, with all rights reserved. ®



THE RESORT COLLECTION

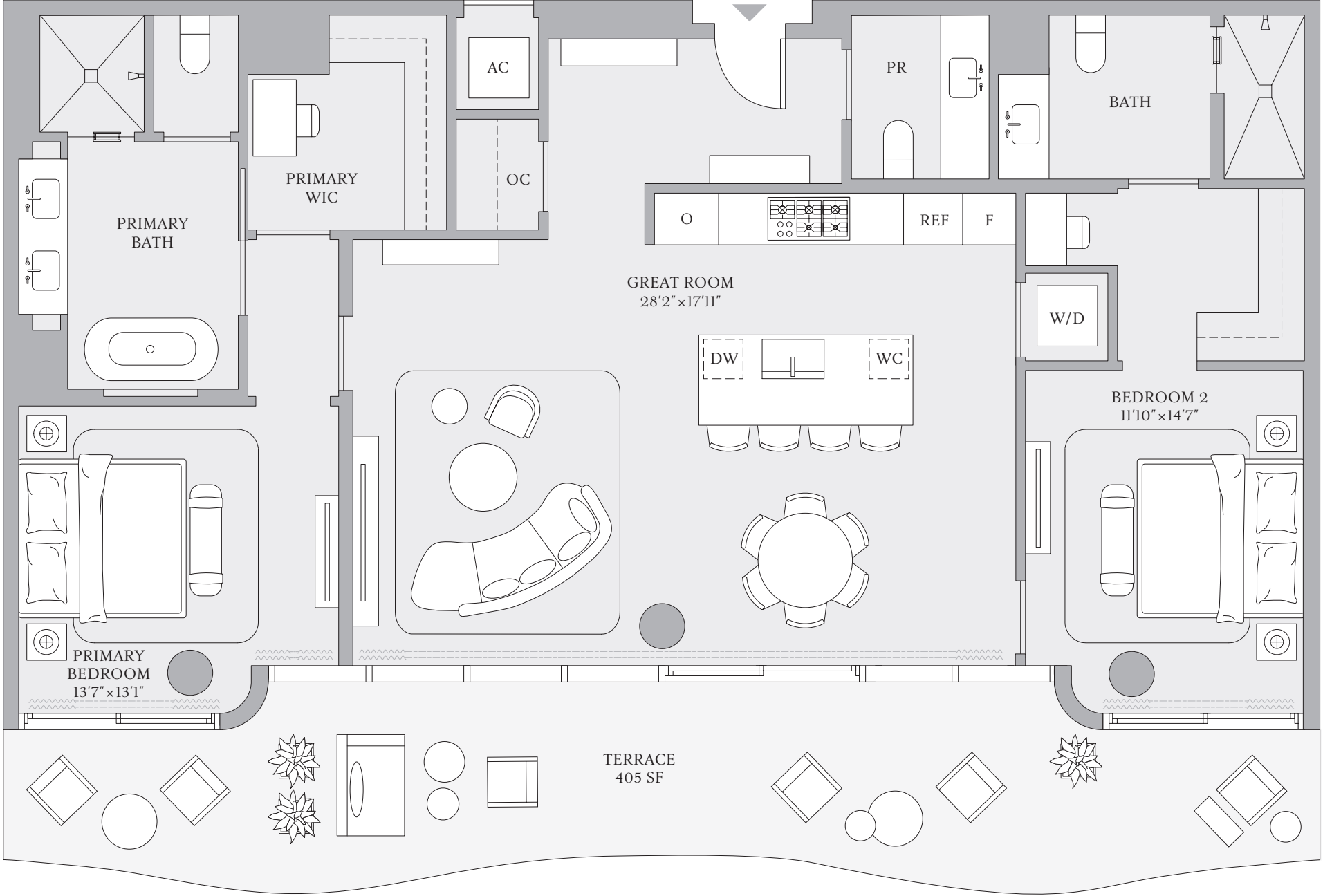
RESIDENCE 08
FLOORS 14, 17, 18

2 BEDROOMS
2 BATHROOMS
POWDER ROOM

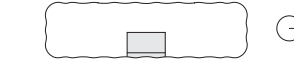
INTERIOR
1,627 SF | 151 SQM

EXTERIOR
405 SF | 38 SQM

TOTAL
2,032 SF | 189 SQM



INTRACOASTAL WATERWAY



ATLANTIC OCEAN



The dimensions stated for any depicted unit floor plan are approximate because there are various recognized methods for calculating the square footage of a unit. The square footage stated herein is calculated from the exterior boundaries of the exterior walls to the centerline of interior demising walls without deductions for cutouts, curves, or architectural features. This method results in quoted dimensions greater than the dimensions that would be determined by using other accepted methods. The definition of "Unit" and the calculation method to be relied upon is set forth by the Developer in the Developer's Prospectus. The method set forth in the Developer's Prospectus is another commonly accepted method of calculation, but it will result in a square footage calculation that is less than the method used here. The illustrated layout, locations of windows, doors, closets, plumbing fixtures, mechanical equipment, appliances, structural elements, architectural elements, and the uses, configurations, and entries to rooms are conceptual and may change based on final approved plans, permitting, and completed construction. The illustrated furniture and the uses of space are suggested uses only and are not intended to represent or guarantee any specific use of space or accommodation of specific furnishings. Furnishings, design features, fixtures, and décor illustrated are not included with a unit purchase. Consult the Developer's Prospectus to understand what is offered with the purchase and the calculation of the Unit square footage and dimensions to be relied upon. 2024 © by PRH/TRR BM Condo, LLC, with all rights reserved. ®



THE RESORT COLLECTION

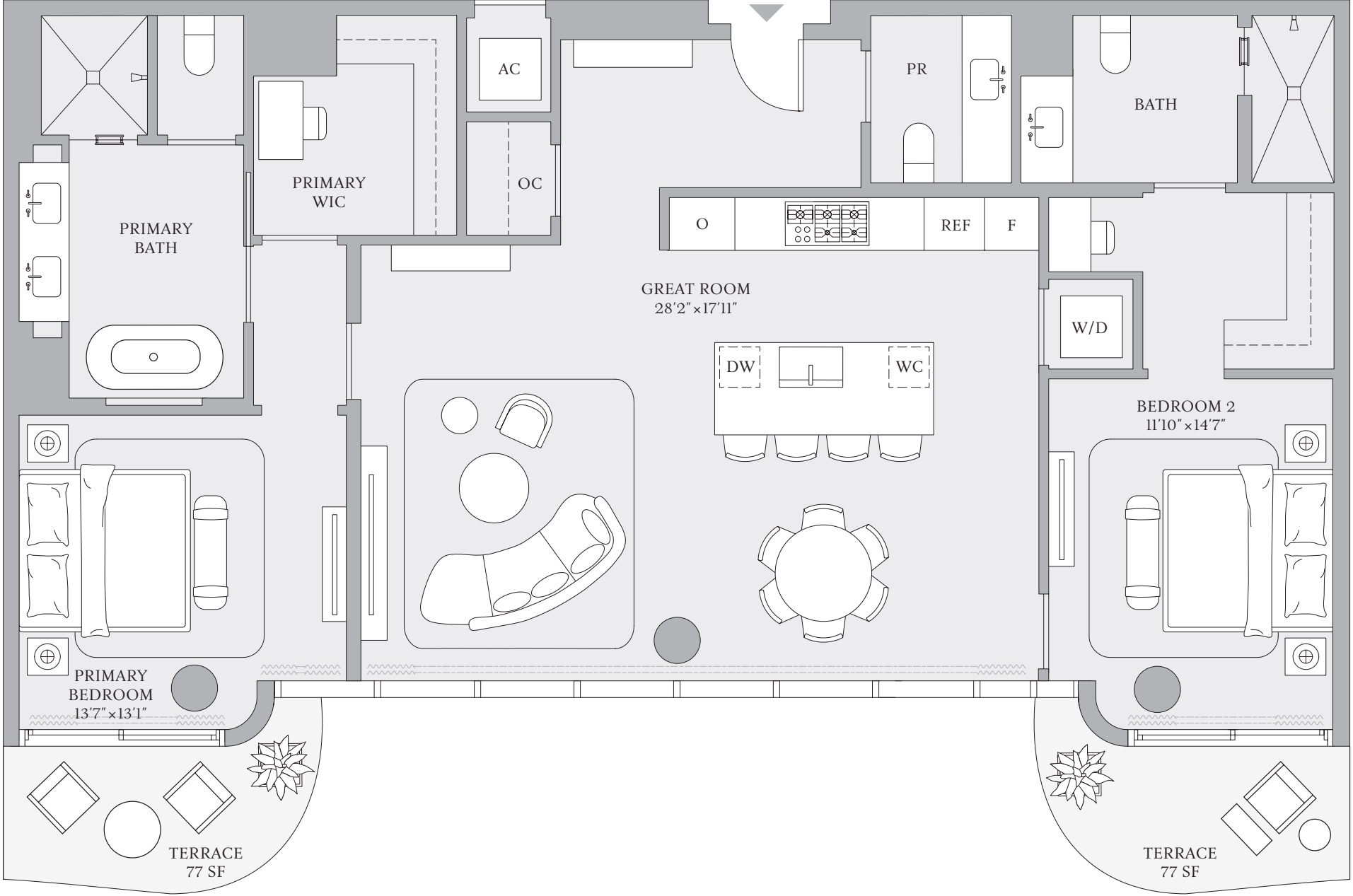
RESIDENCE 08
FLOORS 15, 16

2 BEDROOMS
2 BATHROOMS
POWDER ROOM

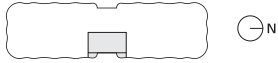
INTERIOR
1,627 SF | 151 SQM

EXTERIOR
154 SF | 14 SQM

TOTAL
1,781 SF | 165 SQM



INTRACOASTAL WATERWAY



ATLANTIC OCEAN



The dimensions stated for any depicted unit floor plan are approximate because there are various recognized methods for calculating the square footage of a unit. The square footage stated herein is calculated from the exterior boundaries of the exterior walls to the centerline of interior demising walls without deductions for cutouts, curves, or architectural features. This method results in quoted dimensions greater than the dimensions that would be determined by using other accepted methods. The definition of "Unit" and the calculation method to be relied upon is set forth by the Developer in the Developer's Prospectus. The method set forth in the Developer's Prospectus is another commonly accepted method of calculation, but it will result in a square footage calculation that is less than the method used here. The illustrated layout, locations of windows, doors, closets, plumbing fixtures, mechanical equipment, appliances, structural elements, architectural elements, and the uses, configurations, and entries to rooms are conceptual and may change based on final approved plans, permitting, and completed construction. The illustrated furniture and the uses of space are suggested uses only and are not intended to represent or guarantee any specific use of space or accommodation of specific furnishings. Furnishings, design features, fixtures, and décor illustrated are not included with a unit purchase. Consult the Developer's Prospectus to understand what is offered with the purchase and the calculation of the Unit square footage and dimensions to be relied upon. 2024 © by PRH/TRR BM Condo, LLC, with all rights reserved. ®



THE RESORT COLLECTION

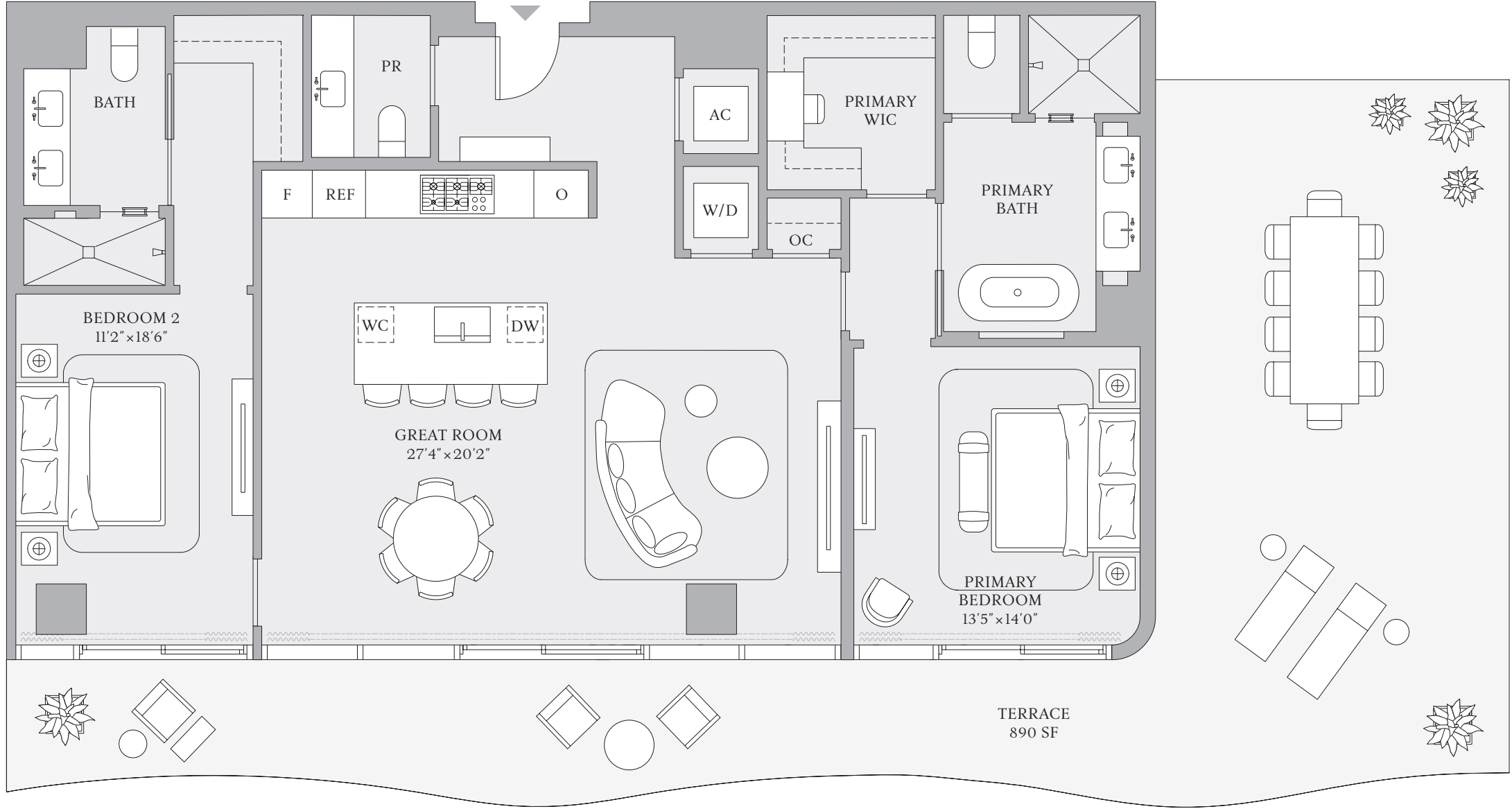
RESIDENCE 09
FLOOR 19

2 BEDROOMS
2 BATHROOMS
POWDER ROOM

INTERIOR
1,678 SF | 156 SQM

EXTERIOR
890 SF | 83 SQM

TOTAL
2,568 SF | 239 SQM



INTRACOASTAL WATERWAY



ATLANTIC OCEAN



The dimensions stated for any depicted unit floor plan are approximate because there are various recognized methods for calculating the square footage of a unit. The square footage stated herein is calculated from the exterior boundaries of the exterior walls to the centerline of interior demising walls without deductions for cutouts, curves, or architectural features. This method results in quoted dimensions greater than the dimensions that would be determined by using other accepted methods. The definition of "Unit" and the calculation method to be relied upon is set forth by the Developer in the Developer's Prospectus. The method set forth in the Developer's Prospectus is another commonly accepted method of calculation, but it will result in a square footage calculation that is less than the method used here. The illustrated layout, locations of windows, doors, closets, plumbing fixtures, mechanical equipment, appliances, structural elements, architectural elements, and the uses, configurations, and entries to rooms are conceptual and may change based on final approved plans, permitting, and completed construction. The illustrated furniture and the uses of space are suggested uses only and are not intended to represent or guarantee any specific use of space or accommodation of specific furnishings. Furnishings, design features, fixtures, and décor illustrated are not included with a unit purchase. Consult the Developer's Prospectus to understand what is offered with the purchase and the calculation of the Unit square footage and dimensions to be relied upon. 2024 © by PRH/TRR BM Condo, LLC, with all rights reserved. ☹



THE RESORT COLLECTION

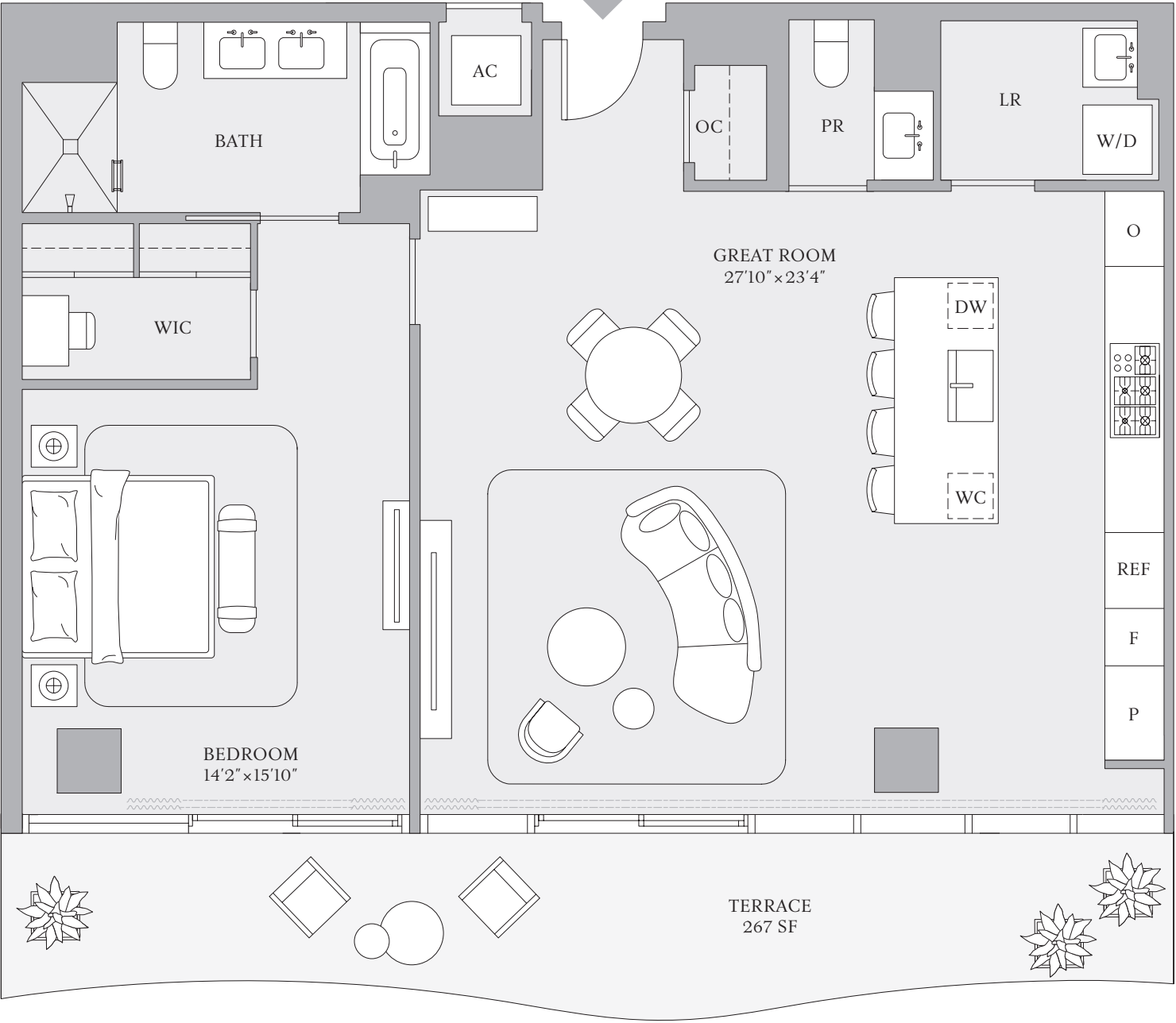
RESIDENCE 09
FLOORS 14–18

1 BEDROOM
1 BATHROOM
POWDER ROOM

INTERIOR
1,343 SF | 125 SQM

EXTERIOR
267 SF | 25 SQM

TOTAL
1,610 SF | 150 SQM



INTRACOASTAL WATERWAY



ATLANTIC OCEAN



The dimensions stated for any depicted unit floor plan are approximate because there are various recognized methods for calculating the square footage of a unit. The square footage stated herein is calculated from the exterior boundaries of the exterior walls to the centerline of interior demising walls without deductions for cutouts, curves, or architectural features. This method results in quoted dimensions greater than the dimensions that would be determined by using other accepted methods. The definition of "Unit" and the calculation method to be relied upon is set forth by the Developer in the Developer's Prospectus. The method set forth in the Developer's Prospectus is another commonly accepted method of calculation, but it will result in a square footage calculation that is less than the method used here. The illustrated layout, locations of windows, doors, closets, plumbing fixtures, mechanical equipment, appliances, structural elements, architectural elements, and the uses, configurations, and entries to rooms are conceptual and may change based on final approved plans, permitting, and completed construction. The illustrated furniture and the uses of space are suggested uses only and are not intended to represent or guarantee any specific use of space or accommodation of specific furnishings. Furnishings, design features, fixtures, and décor illustrated are not included with a unit purchase. Consult the Developer's Prospectus to understand what is offered with the purchase and the calculation of the Unit square footage and dimensions to be relied upon. 2024 © by PRH/TRR BM Condo, LLC, with all rights reserved. ☹



THE RESORT COLLECTION

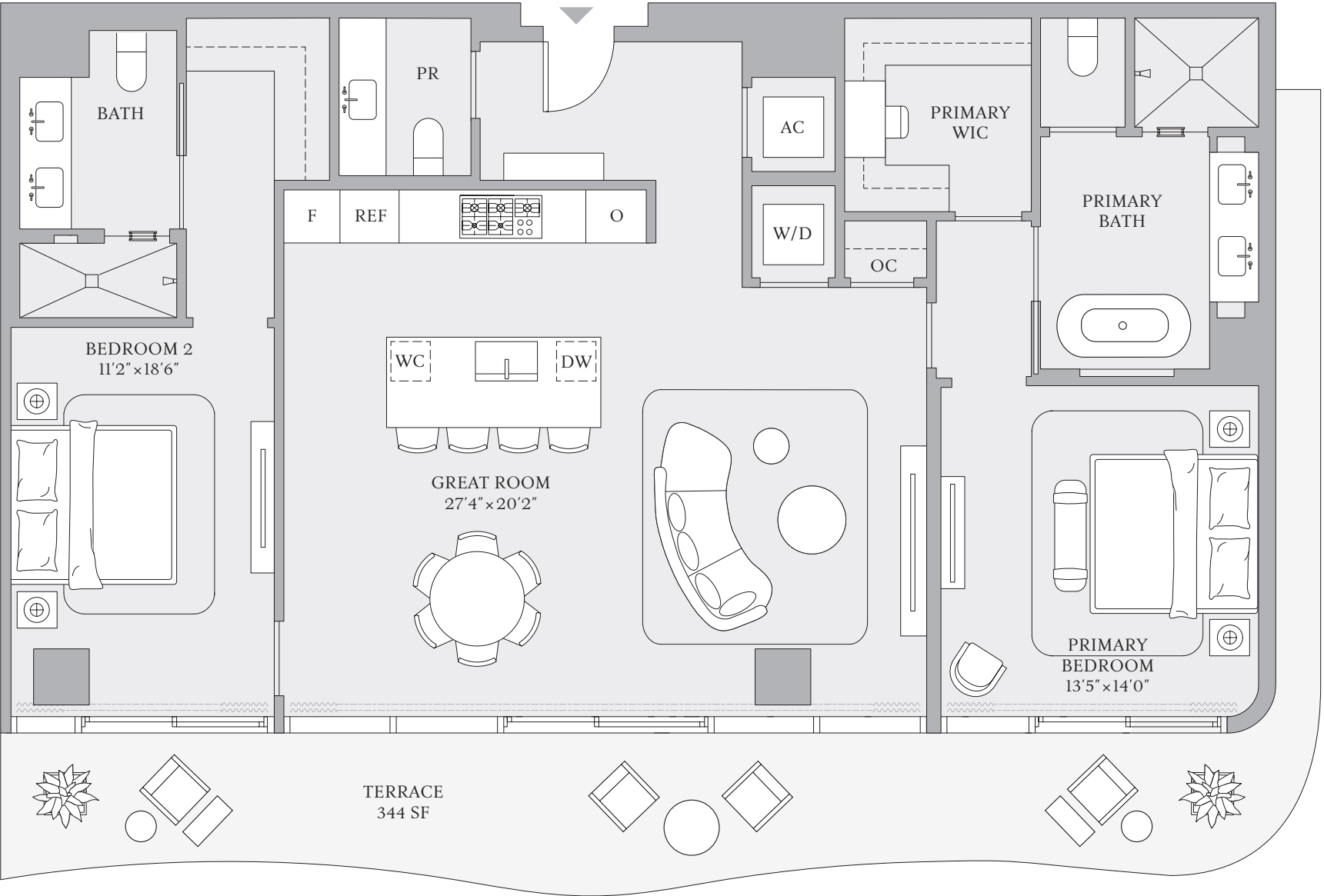
RESIDENCE 09
FLOORS 20–24

2 BEDROOMS
2 BATHROOMS
POWDER ROOM

INTERIOR
1,678 SF | 156 SQM

EXTERIOR
344 SF | 32 SQM

TOTAL
2,022 SF | 188 SQM



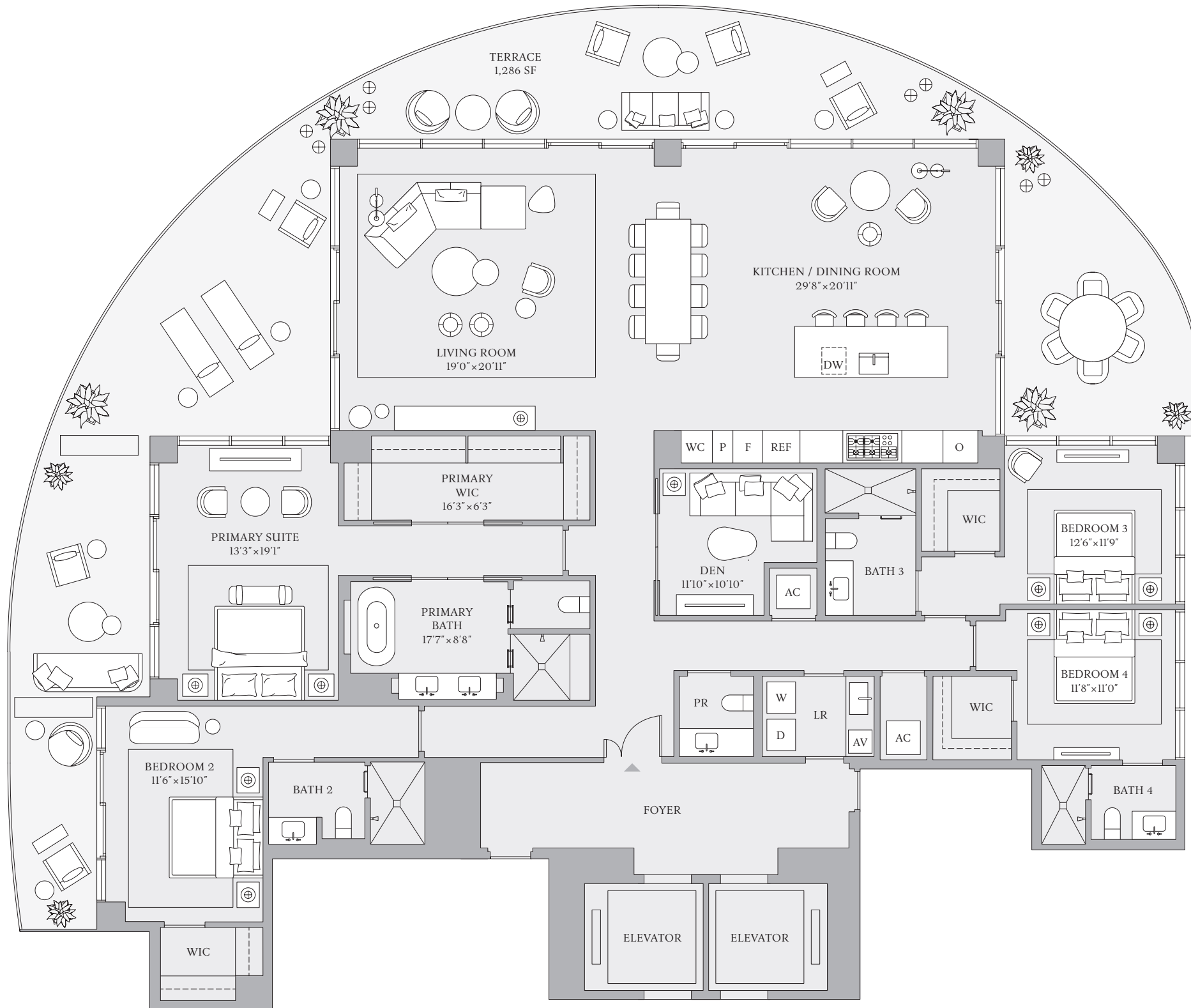
INTRACOASTAL WATERWAY



ATLANTIC OCEAN



The dimensions stated for any depicted unit floor plan are approximate because there are various recognized methods for calculating the square footage of a unit. The square footage stated herein is calculated from the exterior boundaries of the exterior walls to the centerline of interior demising walls without deductions for cutouts, curves, or architectural features. This method results in quoted dimensions greater than the dimensions that would be determined by using other accepted methods. The definition of "Unit" and the calculation method to be relied upon is set forth by the Developer in the Developer's Prospectus. The method set forth in the Developer's Prospectus is another commonly accepted method of calculation, but it will result in a square footage calculation that is less than the method used here. The illustrated layout, locations of windows, doors, closets, plumbing fixtures, mechanical equipment, appliances, structural elements, architectural elements, and the uses, configurations, and entries to rooms are conceptual and may change based on final approved plans, permitting, and completed construction. The illustrated furniture and the uses of space are suggested uses only and are not intended to represent or guarantee any specific use of space or accommodation of specific furnishings. Furnishings, design features, fixtures, and décor illustrated are not included with a unit purchase. Consult the Developer's Prospectus to understand what is offered with the purchase and the calculation of the Unit square footage and dimensions to be relied upon. 2024 © by PRH/TRR BM Condo, LLC, with all rights reserved. ®



TOWER 1 RESIDENCE 01

FLOORS 3-23

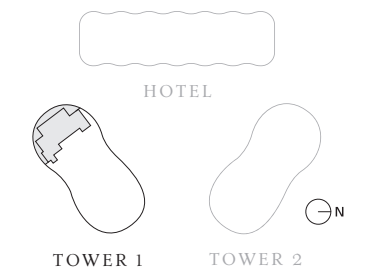
4 BEDROOMS
4 BATHROOMS
POWDER ROOM
DEN

INTERIOR
3,550 SF | 330 SQM

EXTERIOR
1,286 SF | 119 SQM

TOTAL
4,836 SF | 449 SQM

INTRACOASTAL WATERWAY



ATLANTIC OCEAN



The dimensions stated for any depicted unit floor plan are approximate because there are various recognized methods for calculating the square footage of a unit. The square footage stated herein is calculated from the exterior boundaries of the exterior walls to the centerline of interior demising walls without deductions for cutouts, curves, or architectural features. This method results in quoted dimensions greater than the dimensions that would be determined by using other accepted methods. The definition of "Unit" and the calculation method to be relied upon is set forth by the Developer in the Developer's Prospectus. The method set forth in the Developer's Prospectus is another commonly accepted method of calculation, but it will result in a square footage calculation that is less than the method used here. The illustrated layout, locations of windows, doors, closets, plumbing fixtures, mechanical equipment, appliances, structural elements, architectural elements, and the uses, configurations, and entries to rooms are conceptual and may change based on final approved plans, permitting, and completed construction. The illustrated furniture and the uses of space are suggested uses only and are not intended to represent or guarantee any specific use of space or accommodation of specific furnishings. Furnishings, design features, fixtures, and décor illustrated are not included with a unit purchase. Consult the Developer's Prospectus to understand what is offered with the purchase and the calculation of the Unit square footage and dimensions to be relied upon. 2024 © by PRH/TRR BM Condo, LLC, with all rights reserved. ®



TOWER 1 RESIDENCE 02

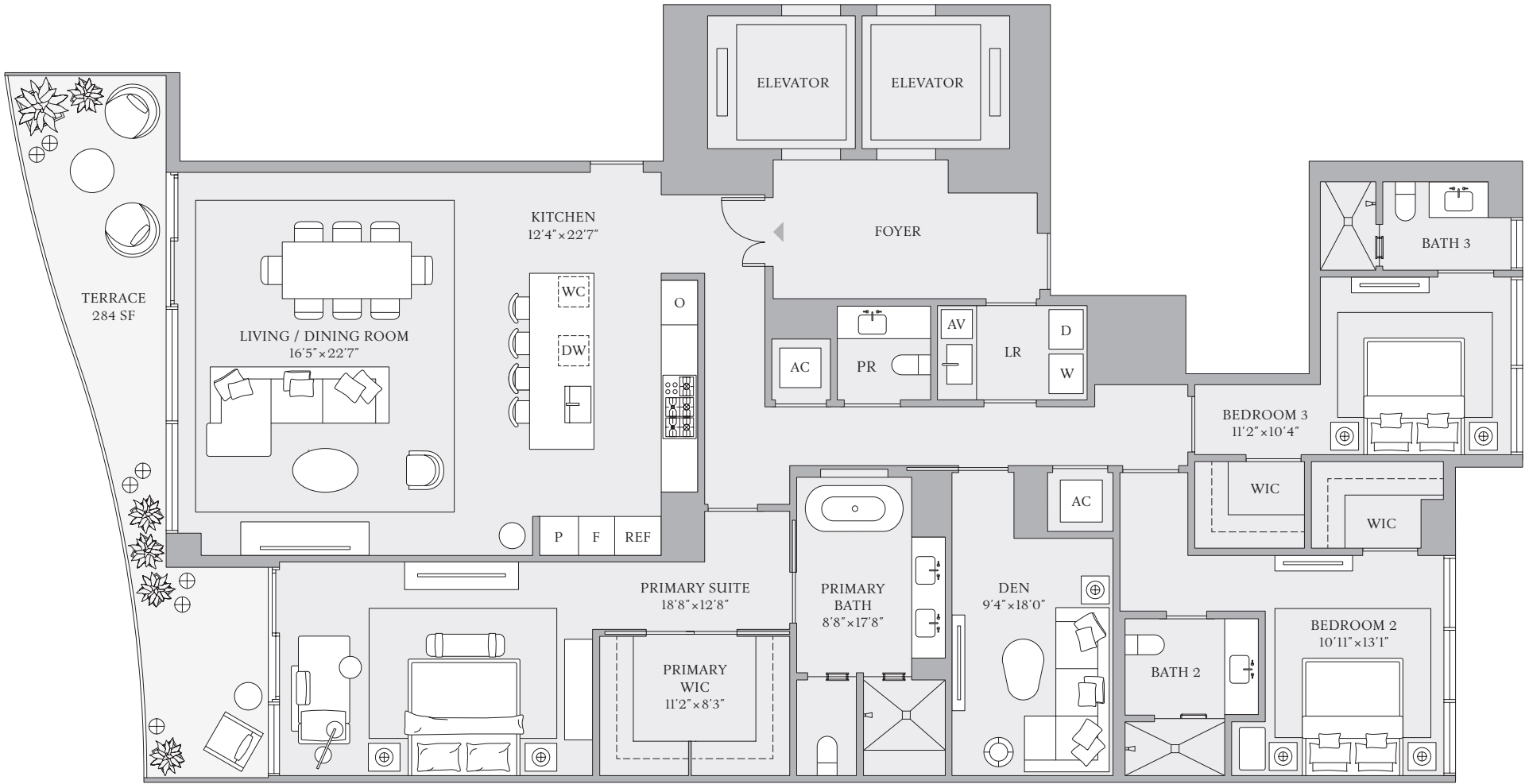
FLOORS 3–23

3 BEDROOMS
3 BATHROOMS
POWDER ROOM
DEN

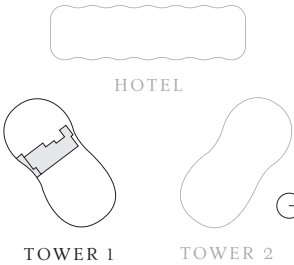
INTERIOR
2,611 SF | 242 SQM

EXTERIOR
284 SF | 26 SQM

TOTAL
2,895 SF | 268 SQM



INTRACOASTAL WATERWAY



ATLANTIC OCEAN



The dimensions stated for any depicted unit floor plan are approximate because there are various recognized methods for calculating the square footage of a unit. The square footage stated herein is calculated from the exterior boundaries of the exterior walls to the centerline of interior demising walls without deductions for cutouts, curves, or architectural features. This method results in quoted dimensions greater than the dimensions that would be determined by using other accepted methods. The definition of "Unit" and the calculation method to be relied upon is set forth by the Developer in the Developer's Prospectus. The method set forth in the Developer's Prospectus is another commonly accepted method of calculation, but it will result in a square footage calculation that is less than the method used here. The illustrated layout, locations of windows, doors, closets, plumbing fixtures, mechanical equipment, appliances, structural elements, architectural elements, and the uses, configurations, and entries to rooms are conceptual and may change based on final approved plans, permitting, and completed construction. The illustrated furniture and the uses of space are suggested uses only and are not intended to represent or guarantee any specific use of space or accommodation of specific furnishings. Furnishings, design features, fixtures, and décor illustrated are not included with a unit purchase. Consult the Developer's Prospectus to understand what is offered with the purchase and the calculation of the Unit square footage and dimensions to be relied upon. 2024 © by PRH/TRR BM Condo, LLC, with all rights reserved. ®



TOWER 1 RESIDENCE 03

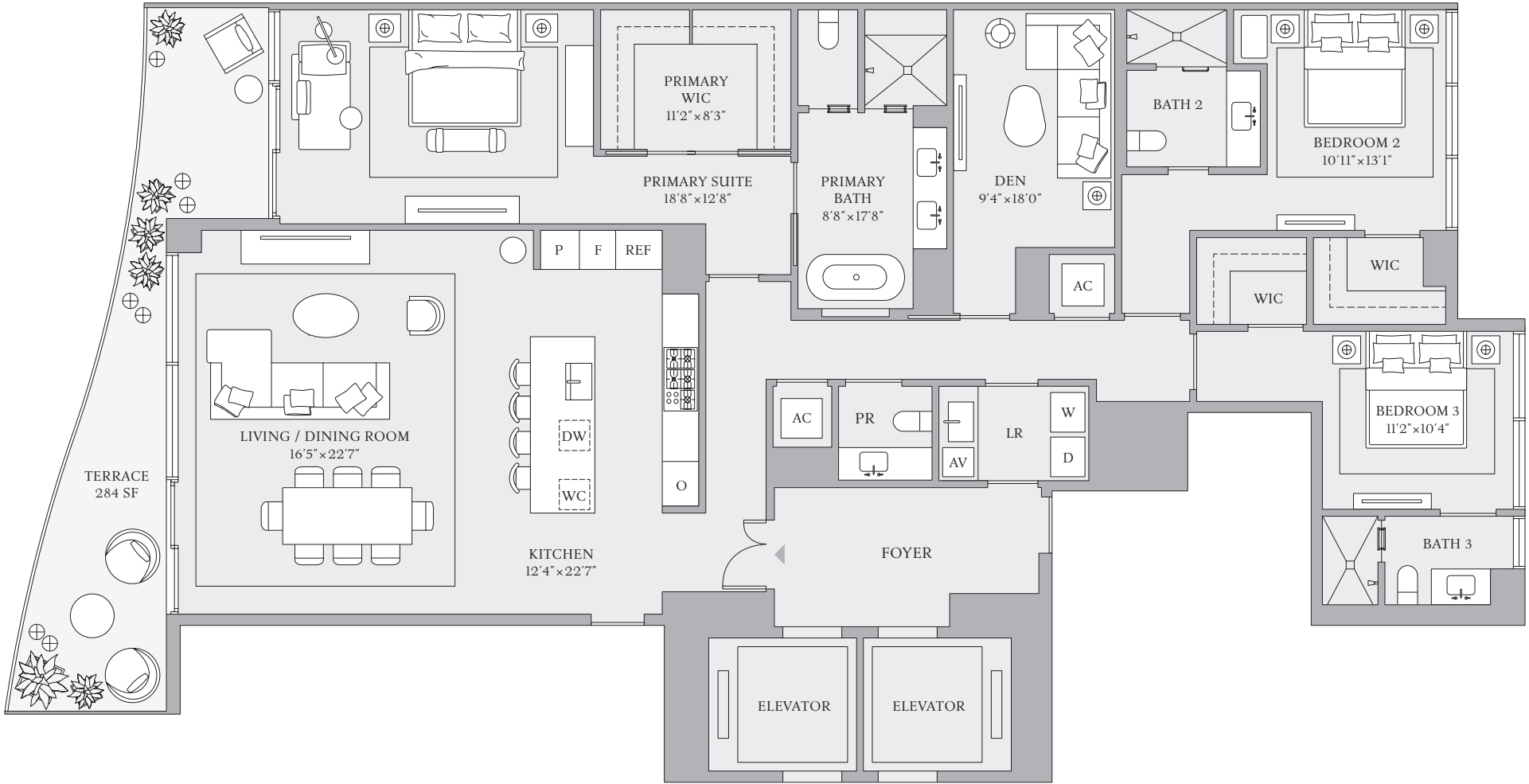
FLOORS 3–23

3 BEDROOMS
3 BATHROOMS
POWDER ROOM
DEN

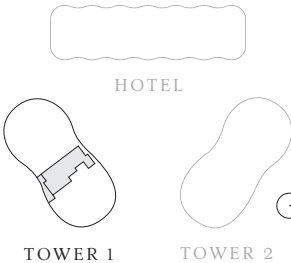
INTERIOR
2,611 SF | 242 SQM

EXTERIOR
284 SF | 26 SQM

TOTAL
2,895 SF | 268 SQM



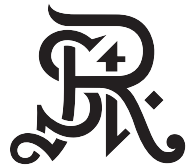
INTRACOASTAL WATERWAY



ATLANTIC OCEAN



The dimensions stated for any depicted unit floor plan are approximate because there are various recognized methods for calculating the square footage of a unit. The square footage stated herein is calculated from the exterior boundaries of the exterior walls to the centerline of interior demising walls without deductions for cutouts, curves, or architectural features. This method results in quoted dimensions greater than the dimensions that would be determined by using other accepted methods. The definition of "Unit" and the calculation method to be relied upon is set forth by the Developer in the Developer's Prospectus. The method set forth in the Developer's Prospectus is another commonly accepted method of calculation, but it will result in a square footage calculation that is less than the method used here. The illustrated layout, locations of windows, doors, closets, plumbing fixtures, mechanical equipment, appliances, structural elements, architectural elements, and the uses, configurations, and entries to rooms are conceptual and may change based on final approved plans, permitting, and completed construction. The illustrated furniture and the uses of space are suggested uses only and are not intended to represent or guarantee any specific use of space or accommodation of specific furnishings. Furnishings, design features, fixtures, and décor illustrated are not included with a unit purchase. Consult the Developer's Prospectus to understand what is offered with the purchase and the calculation of the Unit square footage and dimensions to be relied upon. 2024 © by PRH/TRR BM Condo, LLC, with all rights reserved. 9



TOWER 1 RESIDENCE 04

FLOORS 3–23

4 BEDROOMS
4 BATHROOMS
POWDER ROOM
DEN

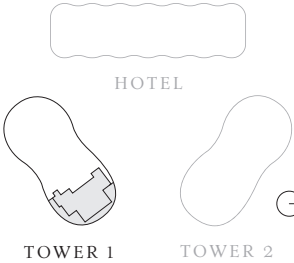
INTERIOR
3,116 SF | 289 SQM

EXTERIOR
1,020 SF | 95 SQM

TOTAL
4,136 SF | 384 SQM



INTRACOASTAL WATERWAY



ATLANTIC OCEAN



The dimensions stated for any depicted unit floor plan are approximate because there are various recognized methods for calculating the square footage of a unit. The square footage stated herein is calculated from the exterior boundaries of the exterior walls to the centerline of interior demising walls without deductions for cutouts, curves, or architectural features. This method results in quoted dimensions greater than the dimensions that would be determined by using other accepted methods. The definition of "Unit" and the calculation method to be relied upon is set forth by the Developer in the Developer's Prospectus. The method set forth in the Developer's Prospectus is another commonly accepted method of calculation, but it will result in a square footage calculation that is less than the method used here. The illustrated layout, locations of windows, doors, closets, plumbing fixtures, mechanical equipment, appliances, structural elements, architectural elements, and the uses, configurations, and entries to rooms are conceptual and may change based on final approved plans, permitting, and completed construction. The illustrated furniture and the uses of space are suggested uses only and are not intended to represent or guarantee any specific use of space or accommodation of specific furnishings. Furnishings, design features, fixtures, and décor illustrated are not included with a unit purchase. Consult the Developer's Prospectus to understand what is offered with the purchase and the calculation of the Unit square footage and dimensions to be relied upon. 2024 © by PRH/TRR BM Condo, LLC, with all rights reserved. ☹